



# LARGE CLOCK, WATCH, TOOL AND SCIENTIFIC INSTRUMENT AUCTION

Sunday, April 19, 2009 – 11 AM

Preview Saturday April 18, 6-9 PM  
and Preview Sunday April 19, 9-11 AM

Showplace – Binghamton Plaza, 33 West State Street,  
Binghamton, NY 13901

**NOTE:** This is a short listing; see inventory lists for order of sale; we will alternately sell items from each list throughout the auction.



**OVER 100 CLOCKS:** BD Bingham, Nashua NH Astronomical Tall Case Clock; Pin Wheel Jeweler's Regulator; Several Master Clocks & Slaves; 6 Time Clocks; 2 Tower Clocks; Eureka, London England; Crystal Regulators; 4 Tiffany Mantel Clocks; 2 Figure-8 Calendars; 100 Other Mantel & Wall Clocks; Calculagraph; Wooden Works Clocks.

**OVER 200 POCKET WATCHES AND WRISTWATCHES:** 1 Minute 18K Repeater; 4 Howard; 3-23J Hamilton; Railroad including Ball; Patek Philippe; Many 21-J; Gold Hunting Cases; Fusee. Wristwatches including Omega; Rolex; Chronographs; Triple Dates, etc.

**TOOLS:** There are 50 miscellaneous lots to be sold throughout the auction from 2 watch makers including: Staffs, Hands, Crystals, Weights, 2 Salesman's Samples of Watch Bands - circa 1960, Assorted Faces. Sophisticated Watchmaker's Tools including Rounding-Up Tool, Pivot Lathe, Depthing Tool, Watch Lathe, etc. Also included are Movements, Staking Set, Roller Jewels, Stems, Crowns, Main Springs, Manuals, Etc.

**SCIENTIFIC EQUIPMENT:** Sextant; Surveyor's Transit; Compasses; Drum & Disk Recorders; Analytic Scales; Japanese WWII Gyroscope, etc.

## ADDITIONAL ITEMS TO BE SOLD THROUGHOUT THE SALE

There are 50 Lots to be sold throughout the auction from 2 Watch Makers including: Staffs, Hands, Crystals, Weights, 2 Salesman's Samples of Watch Bands - circa 1960, Assorted Faces. Sophisticated Watchmaker's Tools including Rounding-Up Tool, Pivot Lathe, Depthing Tool, Watch Lathe, etc. Also included are Movements, Staking Set, Roller Jewels, Stems, Crowns, Main Springs, Manuals, Etc.

**TERMS: 13% Buyer's Premium.** All items sold "as is", no refunds, no returns. Positive ID (driver's license preferred) to bid, unless known to us. If paying by any other method than cash or assured payment, items may be held until payment clears our bank. Sales tax will be charged unless Tax Exempt number provided. Visa, Master Card and Discover accepted. Phone and absentee bidder **must be pre-registered** – use the 'bid form' on our website to register.



LOT C-382



LOT C-327



LOT C-361



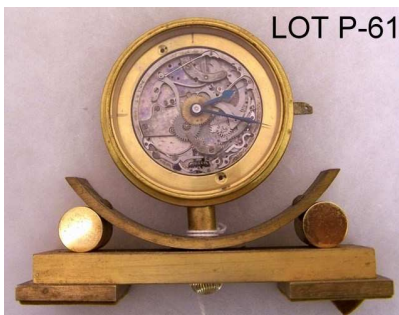
LOT C-399



LOT P-20



LOT P-46



LOT P-61



LOT P-99



LOT P-119



LOT W-226



LOT W-260



LOT S-505



LOT S-511



LOT S-509



LOT S-519



LOT T-551



LOT C-396



LOT C-317



LOT C-331



LOT C-380



LOT C-393



MISC PIC-8



LOT S-509



LOT S-501



LOT S-512



LOT S-523



**Bob & Sallie Connolly**  
 Antiques • Auctions • Appraisals  
 205 State Street  
 Binghamton, New York 13901  
 (607) 722-9593



[www.bobconnelly.com](http://www.bobconnelly.com)