

LARGE ON-SITE ESTATE AUCTION

REAL ESTATE – ANTIQUES – FARM EQUIPMENT

Saturday, June 9th – 10 AM (Preview 9 AM)

358 Route 17C, Waverly, NY 14892

DIRECTIONS: Off NYS 17 (new I-86) to Exit 61, turn north off ramp and drive 1/4 mile and turn right on Route 17C, 1/4 mile to auction, watch for auction signs.

AUCTIONEER'S NOTE: We are selling the home, contents and real estate for the Estate of David Schneider. Everything, except the real estate, is being sold without reserve. **10% Buyer's Premium.**

ANTIQUES & COLLECTIBLES: Oak Half & Half; Walnut Fall-Front Desk; 2-Door Oak Bookcase; Chestnut Side Table; 4 Ice Cream Chairs; Tall Walnut Chest with 6 Drawers; Oak China Closet; 4 Displace Cases; Pedestal; Trunks; Iron Bed; Dome Trunks; Exceptional 19th Century Carpenter's Chest, Wooden Planes, etc.; Spanish Lace Spooner; Flow Blue; Cow Weathervane and Lightening Rod; Secret Society Owl; 1920's Santa Outfit; Costume Jewelry; Linens; Collection of over 50 Bells; Elaborate Cuckoo Clock; Waltham 645 Model 19-Jewel Railroad Watch; Jack Knives; Pieced Quilts and 2 Crazy Quilts; 1883 Niagara Falls Beadwork; Tally Ho Puzzle; Trade Cards; Hires Root Beer Box; Silver Plate; 30 Norman Rockwell Figures; McCoy Dalmatian Cookie Jar; Blackball Box, etc.

CONTEMPORARY: Craftmatic Bed; Swing-Rocker; Wurlitzer Organ; Books; 8 File Cabinets; 5 Desks; Woodstove; Upholstered Furniture; Appliances: Refrigerator, Washer & Dryer, Freezer; Household Items, etc.

MILITARY AND CAR TO BE SOLD AT 11:45

CAR: 1998 Buick Century, 4 Door, 71K Miles, Air, Power Windows and Locks, White with Maroon Interior. Overall condition is very good.

MILITARY: Civil War: Unusual Lindsay Model 1863 2-Shot, Single Barrel Musket; Model 1842 Springfield Musket with Bayonet; Model 1855 Springfield. All muskets are in excellent, like new condition. Model 1842 H. Aston Pistol. Civil War Core Badge & Photo of Civil War NCO wearing Badge; GAR Buttons; 1933 Mohegan Military School Uniform; Dewey Tin Tray; WW II Uniform; 2 WW II Nazi Swords; WW I Binoculars; Winchester Sharpening Stone; 2 Civil War Lithographs:(1) View of H^D Qu^s Military Post, Stevenson, Alabama (2) Camp of 20th Connecticut Volunteers, Stafford, Court House Virginia; both by Henry C. Eng, 37 Park Row, NY



COW WEATHERVANE



HIT & MISS ENGINE

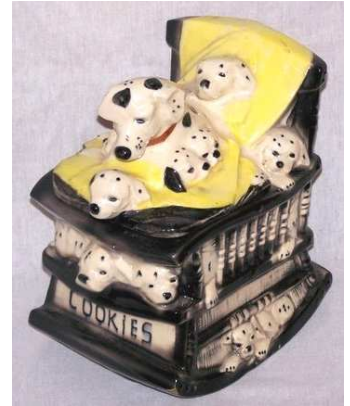
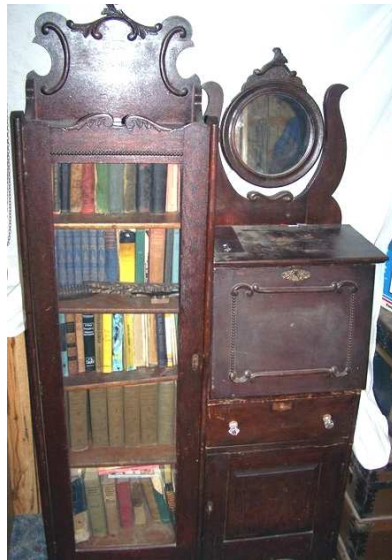


NORMAN ROCKWELL FIGURES



Bob & Sallie Connolly
 Antiques • Auctions • Appraisals
 205 State Street Binghamton, New York 13901
 (607) 722-9593





FALL FRONT DESK JACK & SECRET SOCIETY OWL OAK 1/2 & 1/2 MCCOY COOKIE JAR

FARM EQUIPMENT & TOOLS TO BE SOLD IN SEPARATE AUCTION
STARTING AT 10:15 – AUCTIONEER: MARK LEWIS

FARM TRACTORS & VEHICLES: Ford 1720 4-Wheel Drive, 2100 Hours; 8N Ford Tractor; Allis-Chalmers, Model G, 1949 with Cultivator, Single Plow & Potato Hiller – All Running and to be sold as one unit; Allis-Chalmers 1959 D-17, 46 HP, New Tires, New Rims, New Engine with less than 10 Hours; Bobcat 553 Skid-Steer Loader with 1000 Hours, Pallet Fork and Manure Fork will be sold separately; Clark Bobcat, not running; Ariens Garden Tractor, 16-HP with Snowplow and Disk Cultivator; 1987 Ford 150 Pickup Truck, as is; 2 Postal Jeeps, as is; 3 Gravely Walk Behind Tractors; 2 Allis-Chalmers WC Tractors, as are; McCormick Deering Hit & Miss Engine for International Harvester, Speed 500 #AW37231, as is; Clark Bobcat – for parts, etc.

FARM EQUIPMENT: Allis-Chalmers Model 60 Combine; New Holland 310 Hayliner with Chute; New Holland 5' Rototiller with 3-Point Hitch; Grasshopper 614 14-HP Lawnmower, 2 years old; Troy-Bilt Rototiller; Gehl HK 440 Hay Mower & Conditioner; 16' Folding Drag; Square Bail Chopper; Wooden Wagon Frame; 6' Sickle Bar, Dearborn with 3-Point Hitch; 5' Cultivator with 3-Point Hitch; Western Saddle; Walk Behind Brush Hog; Mantis 2-Cycle Rototiller; John Deere 2 Bottom Plow with 3-Point Hitch; John Deere Corn Planter with 3-Point Hitch; Potato Grader; Hay Wagons; 200 Bails of Hay; Hay Rack; 6' Disk Cultivator with 3-Point Hitch; Century Sprayer 120 Gallon Tank with Pump; Two 2 Row Cultivators; Fertilizer Broadcaster Spreader, 3-Point; 6' Hay Conditioner; 5' Bush Hog with 3-Point Hitch; 2 Pallets of Maple, air dried; PTO Potato Digger; 3-Point Cultivator and Weeder; Three 3 Bottom Allis-Chalmers Plows with Snap Couplers; 10 Piece Horse Draw Equipment, scrap metal ?, etc.

TOOLS: Floor Model Drill Press; Bench Model Drill Press; Wood Lathe; 10" Delta Radial Arm Saw; Band Saw; 10" Table Saw; 18 Volt Milwaukee Cordless Sawzall & Drill; Belt Sander; Router; Jack Stands; Tool Grinders; Tool Chest; Anvil; Tool Chests; Lincoln Welder; 20 Ton Arbor Press; 2 Old Cast Iron Wood Planers; 3/4 Drive Socket Set; Large Assortment of Hand Tools, Chains; Chains and Small Tools; Craftsman 25 Gallon Vertical Air Compressor; Parts Washer; Cement Mixer; Acetylene Torches & Gauges; Pressure Washer; Craftsman Planer; Floor Jacks; Parts Bins and Hardwar, etc.

TENTS IF NEEDED – BRING YOUR OWN CHAIRS & BOXES – REFRESHMENTS AVAILABLE



TOY CAP PISTOLS



QUILTS



A-C 1959 D-17 TRACTOR



ARIENS - 16 HP



FORD 1720 4-WHEEL DRIVE



8N FORD TRACTOR



GRASSHOPPER MOWER



BOBCAT 553 SKID-STEER



BROADCASTER



CIVIL WAR NCO



CUCKOO



WALNUT CHEST



ALLIS-CHALMERS MODEL G



NEW HOLLAND HAYLINER W CHUTE



1998 BUICK CENTURY



CIVIL WAR GUNS & NAZI SWORDS



19th CENTURY TOOL BOX