

# MOPAR & MUSCLE CAR PARTS AUCTION

## A LIFETIME COLLECTION OF MOPAR & OTHER PARTS

### ON-SITE ESTATE AUCTION

**SATURDAY, NOVEMBER 14<sup>th</sup> 12 NOON (Preview 10)**  
**1028 Chenango Street, Binghamton, NY 13901**

**DIRECTIONS:** From I-81 & NYS-17, Exit 4N onto NYS 7 north, 1 mile take Hillcrest Exit, right onto Chenango Street and drive 600 feet – watch for auction signs.

**NOTE:** We are selling items for the Estate Gary & Joan Sage. Gary was a lifetime MOPAR collector specializing in 1968 and 1969 Big Block Mopars. All items sold without reserve "as is", no refunds, no returns. The following is a short list.

**MORE INFORMATION AND PICTURES SEE AUCTIONZIP.COM #1162**



**MOPAR:** Original Mopar NOS items include an Edelbrock Street Torker Intake Plate, Mint still in the Original Mopar Box; Several Big Block Crankshafts Still in Original Boxes; Lamps; Lenses; Engine Parts and More. Loads of Good Used Hard to Find parts including a 1957-58 392 Dual Quad Intake; Early 1960's 413 Dual Quad Intake complete with Carburetors; Several Big Block 4 Barrel Intakes of various Casting Numbers and Date Codes; Many AFB and Holley 4 Barrel Carburetors; 9 Mopar Blocks with 1969 & 1970 Date Codes; Several Big Block Heads and Exhaust Manifolds.

1968 & 1969 Charger Rally Dash Clusters, Complete Dashes, Steering Columns, Glass, Chrome Trim Molding, Rally Wheels, Doors, Hoods, Including Scooped Hoods, Trunk Lids, Including 1968 GTX Lid with Finish Panel, Bumpers including several Re-chromed Bumpers Still in 1970's Packing, Brake Drums, Steering Boxes and Much, Much More Saved from parts cars and safely stored away for decades.

**TO BE SOLD AS ONE LOT:** 1969 DODGE DAYTONA, Used Original Front Nose Cutoff With Headlamp Assemblies, Braces and Brackets still in the crate it was shipped in from Ontario Canada several years ago along with the Complete Rear Wing Set including Mounts and Brackets, as well as the Daytona Rear Window Plug With the Original Back Glass. This package along with the Daytona Fender Tag, Registration and the Car's History from the time it was bought new in California to its demise in Ontario Canada will all be sold as one lot.

1969 Fin will also be sold separately as well as a 1968 Charger R/T with restoration started. The Charger R/T was last registered in 1977 and last driven in 1975. This is an L Code 440 High Performance Automatic with Posi. Well optioned car, AM/FM, Tachometer, Rally Wheels, Simulated Wood Steering Wheel, Suspension Package and much more. The car will be sold with Registration, Original Build Sheet and Several NOS Trim Parts. This is a Large Collection that has been hoarded away and not seen daylight in years.

**NON-MOPAR:** Some of the Non Mopar items include Re-chromed GM Bumpers and a GTO Floor Shift Console with a Tachometer.

**TENTS IF NEEDED**

**BRING YOUR OWN CHAIRS & BOXES**

**TERMS: 10% Buyer's Premium.** All items sold "as is", no refunds, no returns. Positive ID (driver's license preferred) to bid, unless known to us. If paying by any other method than cash or assured payment, items may be held until payment clears our bank. Sales tax will be charged unless Tax Exempt number provided. Visa, Master Card and Discover accepted. Phone and absentee bidder must be pre-registered – use the 'bid form' on our website to register. All items must be removed day of auction unless specific arrangements are made with us.



*Bob & Sallie Connelly*  
**Antiques • Auctions • Appraisals**  
205 State Street Binghamton, New York 13901  
(607) 722-9593

**www.bobconnelly.com**





**NOTE: PHOTO NUMBERS REFER TO DESCRIPTIONS ON AUCTIONZIP.COM #1162**



PHOTO #01

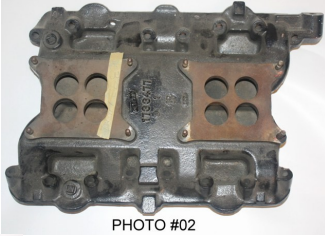


PHOTO #02



PHOTO #03

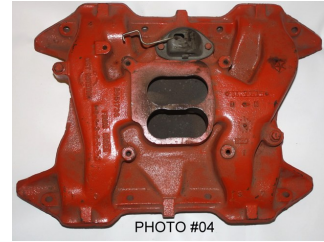


PHOTO #04



PHOTO #07

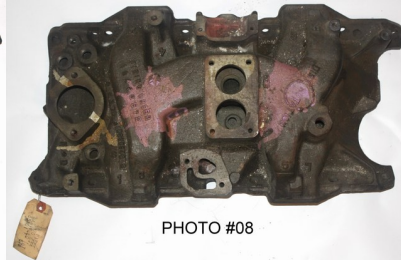


PHOTO #08



PHOTO #09



PHOTO #12



PHOTO #16



PHOTO #17



PHOTO #22



PHOTO #23

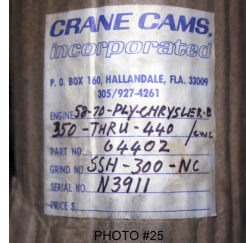


PHOTO #25



PHOTO #26



PHOTO #28-01



PHOTO #28-03

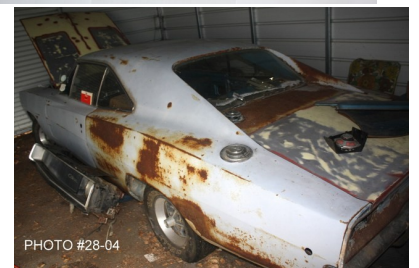


PHOTO #28-04



PHOTO #28-06



PHOTO #29-01



PHOTO #29-02



PHOTO #29-09



PHOTO #33-02



PHOTO #36

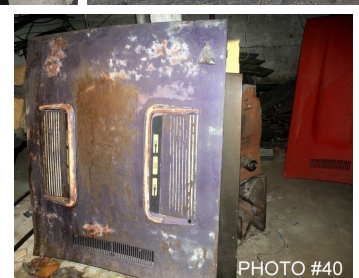


PHOTO #40